

MIDAS - Bond Opportunities A - Acc

Monthly summary report | as at 31 August 2018

Investment Objective

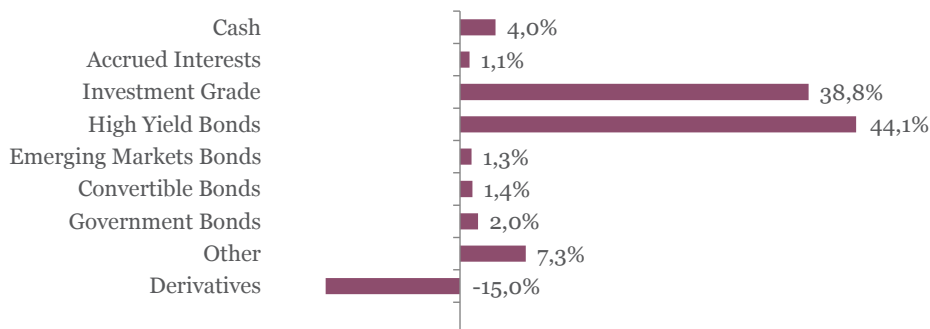
The fund seeks to achieve capital appreciation over the medium term by investing in a diversified portfolio of Euro-denominated fixed income securities (investment-grade corporate bonds, government bonds, high yield and emerging market debt as well as convertible bonds). The main focus is put on bottom-up selection. Interest rate as well as credit risks are managed actively.

Latest Update		Performance	1M	YTD	2017	2016	2015	3Y	SI
NAV per share	112,59	Midas Bond Opp.	0,29%	-0,96%	4,63%	3,81%	-0,29%	6,36%	12,59%
2018 year-to-date return as at 31 August 2018									

Fund key facts

Inception date*	25 November 2013
ISIN code	LU0927887504
Asset class	Bonds in EUR
Total fund assets	€ 150 million
Base currency	EUR
Legal status	Luxembourg UCITS
Management Fee	1,00%
Custodian	Crédit Suisse Lux
Liquidity	Daily
Settlement Date	Trade Date + 2 Days

Asset Allocation

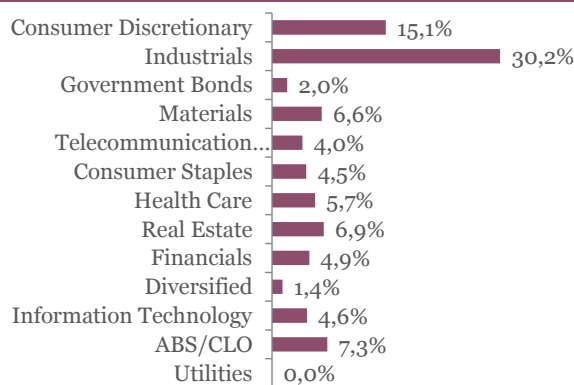


Top 10 bond holdings

	YTM	Rating	Weight
ALTICE FRANCE : SFRFP 5 7/8 02/01/27	5,1%	B+	2,8%
PRYSMIAN SPA : PRYIM 2 1/2 04/11/22	1,8%	NR	2,0%
GLENCORE FINANCE : GLENLN 1 7/8 09/11/22	1,5%	BBB+	2,0%
BOLLORE SA : BOLFP 2 01/25/22	1,6%	NR	2,0%
SIXT SE : SIXT 1 1/2 02/21/24	1,3%	NR	2,0%
BENI STABILI : BNSIM 1 5/8 10/17/24	1,5%	BBB	2,0%
HELLENIC T-BILL : GTB 0 10/05/18	0,7%	NR	2,0%
JUBIL 2014-11X DR : JUBIL 2014-11X DR	1,6%	BBB	2,0%
WHIRLPOOL FIN : WHR 1 1/4 11/02/26	1,5%	BBB	2,0%
INGENICO GROUP : INGFP 1 5/8 09/13/24	1,9%	NR	2,0%

*Cash & Cash Equivalents

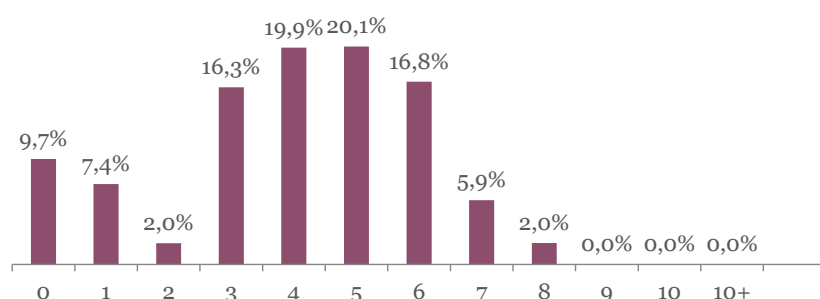
Sector breakdown



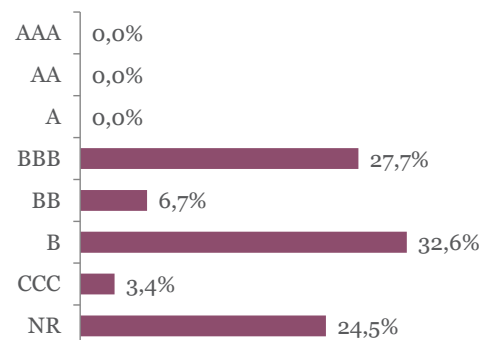
MIDAS - Bond Opportunities A - Acc

Monthly summary report | as at 31 August 2018

Duration breakdown



Rating breakdown



Top funds holdings

MM Convertible Europe	Convertible Bonds	1.4%
-----------------------	-------------------	------

Market Review

Bond markets reacted to the resurgence of both the Italian risk, with concerns about the 2019 budget deficit, and Emerging Market risk, with the Turkish lira rout which spread globally, especially in LatAm.

In spite of the Bund rally (German 10Y rate went down by 12bp to 0.33% over the month), the iBoxx Eurozone Sovereigns Index lost 0.57% in August mainly due to the Italian spread widening. Indeed, the Italy 10Y yield spread compared to Germany jumped by 63bp to 291bp, the highest level since 2013.

On the credit side, the iBoxx € Corporates index increased by 0.08% compared to only 0.02% for the iBoxx € High Yield index. Credit spreads widened slightly, with an increase of 8bp on the European Main index and 19bp on the Cross-Over index, in line with the equity market drop (-3.7% on the Euro Stoxx 50).

Portfolio Performance

The fund gained 0.29% in August. The performance was driven by the rebound of some high yield issuers (Norican, CMA CGM, Altice, Stada, Schenck) which offset the underperformance of some investment grade (BNP Paribas, Ferrovie dello Stato) and high yield (Refresco, Thomas Cook) names.

We maintained a balanced mix of investment grade and high yield bonds to keep a yield close to 3.3%, while limiting the credit risk. Moreover, we reduced the fund duration to 3.65 to hedge against the interest rate risk.

Market Outlook

Supported by a resilient but maturing global economic environment and a good earnings season, we maintain a constructive stance towards risky assets, notably the high yield segment which still offer relatively attractive yields. Besides, as the central banks (Fed, ECB) edge towards tightening policies, we prefer sticking to the middle of the interest rate curve.

This newsletter does not constitute an offer to sell or the solicitation of an offer to purchase any security or investment product. Information herein is believed to be reliable but Midas Wealth Management does not warrant its completeness or accuracy. The opinions expressed within are entirely those of Midas Wealth Management and do not constitute an offer of investment advice. Past performance will not necessarily be repeated and is not indicative of future results. The investments discussed may fluctuate in price or value and you may not get back the amount invested. The indices shown are presented only to allow for comparison of the Midas Wealth Management funds' performance to that of certain widely recognised indices. The volatility of the indices may be materially different from the individual performance attained by a specific fund or investor. In addition, the Midas Wealth Management fund holdings may differ significantly from the securities that comprise the indices shown. Investors cannot invest directly in an index. Performance figures reflect the reinvestment of all dividends and earnings, as well as investment management, administration and performance fees. A description of the specific fee structure and risks of investing for each Midas Wealth Management fund is contained in the fund's prospectus. No part of this document may be reproduced in any manner without the prior written permission of Midas Wealth Management.

* Performance has been calculated since inception on the 25th of November 2013 of Expert Investor Sicav Midas Bond Opportunities Fund which merged into Midas Sicav Bond Opportunities Fund on the 1st of August 2016.