

MIDAS - Bond Opportunities A - Acc

Monthly summary report | as at 30 November 2018

Investment Objective

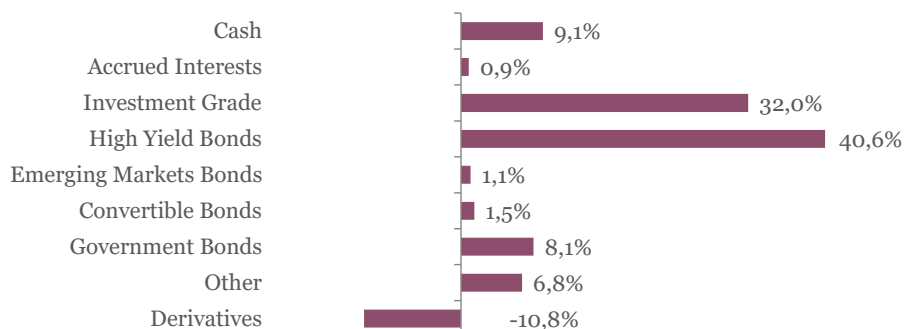
The fund seeks to achieve capital appreciation over the medium term by investing in a diversified portfolio of Euro-denominated fixed income securities (investment-grade corporate bonds, government bonds, high yield and emerging market debt as well as convertible bonds). The main focus is put on bottom-up selection. Interest rate as well as credit risks are managed actively.

Latest Update		Performance	1M	YTD	2017	2016	2015	3Y	SI
NAV per share	108,69	Midas Bond Opp.	-2,35%	-4,39%	4,63%	3,81%	-0,29%	2,29%	8,69%
2018 year-to-date return as at 30 Nov 2018	-4,39%								

Fund key facts

Inception date*	25 November 2013
ISIN code	LU0927887504
Asset class	Bonds in EUR
Total fund assets	€ 132 million
Base currency	EUR
Legal status	Luxembourg UCITS
Management Fee	1,00%
Custodian	Crédit Suisse Lux
Liquidity	Daily
Settlement Date	Trade Date + 2 Days

Asset Allocation

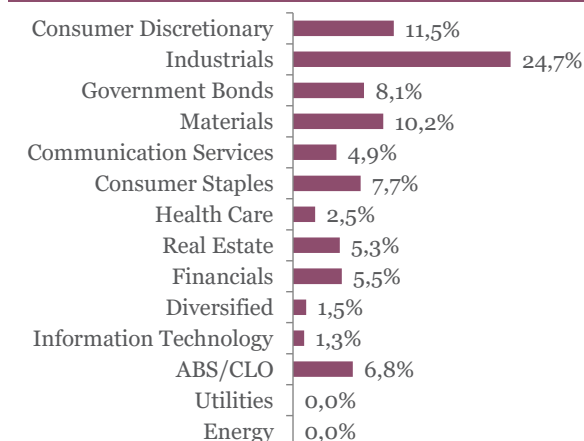


Top 10 bond holdings

	YTM	Rating	Weight
DEUTSCHLAND REP : DBR 0 1/4 08/15/28	0,3%	AAA	3,8%
VILMORIN ET COMP : RINFP 2 3/8 05/26/	1,0%	NR	2,3%
JUBIL 2014-11X DR : JUBIL 2014-11X DR	1,6%	BBB	2,2%
BTPS : BTPS 2.8 12/01/28	3,2%	BBB	2,2%
EL CORTE INGLES : CRTING 3 03/15/24	2,6%	BB+	1,9%
GLEN CORE FINANCE : GLENLN 1 7/8 09/	1,8%	BBB+	1,9%
PRYSMIAN SPA : PRYIM 2 1/2 04/11/22	2,7%	NR	1,9%
BENI STABILI : BNSIM 1 5/8 10/17/24	1,8%	BBB-	1,9%
PROMONTORIA : PRMHLD 6 3/4 08/15/28	7,0%	B	1,9%
SPIE SA : SPIEFP 3 1/8 03/22/24	3,5%	BB	1,9%

*Cash & Cash Equivalents

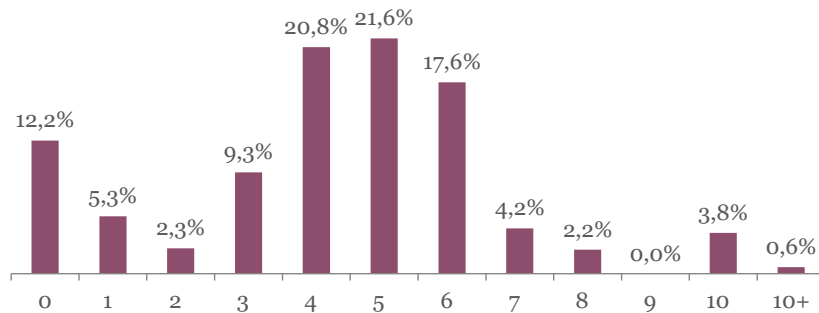
Sector breakdown



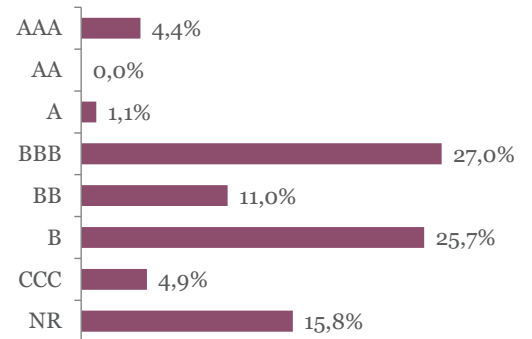
MIDAS - Bond Opportunities A - Acc

Monthly summary report | as at 30 November 2018

Duration breakdown



Rating breakdown



Top funds holdings

MM Convertible Europe Convertible Bonds 1,5%

Market Review

Financial markets extended rout in November, with cooling economy and trade war fears. Besides, the Federal Reserve indicated it might pause rate hikes, as it is getting closer to neutral.

German sovereign bonds index increased by +0.42%, with 10Y yield declined by 7 bps to 0.31%. As 2Y yield inched upwards by 2 bps, 2-10 curve flattened by 9 bps to 91 bps. US 10Y yield also dropped by 16 bps to 2,99% and 2-10 curve flattened by 8 bps to 20 bps. Italian 10Y sovereign spread to its German counterpart remained under pressure, but finally tightened by 14 bps to 290 bps (yield=3.21%). Indeed, the Italian government showed a constructive bias towards a 2019 deficit reduction to comply with EU rules. Credit bonds underperformed government bonds, as spreads widening overtook rate drop. In IG, the Bloomberg Barclays IG Corporate bonds index declined by 0.64%, with spreads widening by 23 bps. BBB, financial and subordinated bonds underperformed A, non-financial and senior bonds respectively. In HY, the Bloomberg Barclays HY bonds index slumped by 2.05%, with spreads widening by 74 bps. B underperformed BB. Convertibles bonds were also under pressure: The Bloomberg Barclays EUR Convertibles bonds index dropped by 1.50%.

Portfolio Performance

The fund lost 2.35% in November. HY bonds contributed the most, as credit spreads (especially B) widened sharply. Some bonds suffered from disappointing earnings release (Fives, Paprec, Thomas Cook, Jaguar, Almaviva) while German sovereign bonds were positive. Convertible bonds and CLOs also contributed negatively.

Market Outlook

We expect the economy to slow down but to remain positive next year. As HY spreads reached our next year target, we are constructive on this asset class. In the IG segment, spreads are still tight and should suffer from the end of ECB's QE program. Otherwise, we think government bonds shall perform, supported by inflationary pressure fading. Fund duration to worst reached 4.8, while yield to worst decreased to 3.45%, as some IG and HY names were switched towards government bonds.

This newsletter does not constitute an offer to sell or the solicitation of an offer to purchase any security or investment product. Information herein is believed to be reliable but Midas Wealth Management does not warrant its completeness or accuracy. The opinions expressed within are entirely those of Midas Wealth Management and do not constitute an offer of investment advice. Past performance will not necessarily be repeated and is not indicative of future results. The investments discussed may fluctuate in price or value and you may not get back the amount invested. The indices shown are presented only to allow for comparison of the Midas Wealth Management funds' performance to that of certain widely recognised indices. The volatility of the indices may be materially different from the individual performance attained by a specific fund or investor. In addition, the Midas Wealth Management fund holdings may differ significantly from the securities that comprise the indices shown. Investors cannot invest directly in an index. Performance figures reflect the reinvestment of all dividends and earnings, as well as investment management, administration and performance fees. A description of the specific fee structure and risks of investing for each Midas Wealth Management fund is contained in the fund's prospectus. No part of this document may be reproduced in any manner without the prior written permission of Midas Wealth Management.

* Performance has been calculated since inception on the 25th of November 2013 of Expert Investor Sicav Midas Bond Opportunities Fund which merged into Midas Sicav Bond Opportunities Fund on the 1st of August 2016.